



**RAMP DOOR PATIO KIT
OWNER'S MANUAL**

**L I P P E R T
C O M P O N E N T S[®]**

TABLE OF CONTENTS

Introduction	2
Safety	2
Operation	3

Introduction

Lippert Components Patio Railing Kits are designed to help make the ramp door a comfortable, additional living space. The self-storing design stays attached to ramp door at all times and provides additional entertaining space on the toy hauler ramp door. The easy to follow instructions in this manual will describe the process of setting up the Ramp Door Patio Kit.

Additional information about this product can be obtained from [lci1.com/support](https://support.lci1.com/support) or by downloading the free myLCI app. The app is available on iTunes® for iPhone® and iPad® and also on Google Play™ for Android™ users. iTunes®, iPhone®, and iPad® are registered trademarks of Apple Inc. Google Play™ and Android™ are trademarks of Google Inc.

For information on the assembly or individual components of this product, please visit:
<https://support.lci1.com/doors-support-patio-rail-kits> .

NOTE: Images used in this document are for reference only when assembling, installing and/or operating this product. Actual appearance of provided and/or purchased parts and assemblies may differ.

NOTE: Cables are not always shown in the images for clarity purposes.

Safety

WARNING

The “WARNING” symbol above is a sign that a procedure has a safety risk involved and may cause death or serious personal injury if not performed safely and within the parameters set forth in this manual.

WARNING

The maximum weight rating for the Ramp Door is 3,000 pounds. The maximum weight rating for the Party Deck is 1,500 pounds. Exceeding the maximum weight ratings can cause death, serious injury or damage to the unit. **DO NOT** allow the ramp door to fall while lowering into level position, as this could cause injury or damage to the unit or door.

WARNING

Do not remove set screw. Failure to follow this warning may result in death, serious personal injury and/or property damage. See owner’s manual for instructions on use of adjustable cable.

CAUTION

The “CAUTION” symbol above is a sign that a safety risk is involved and may cause personal injury and/or product or property damage if not safely adhered to and within the parameters set forth in this manual.

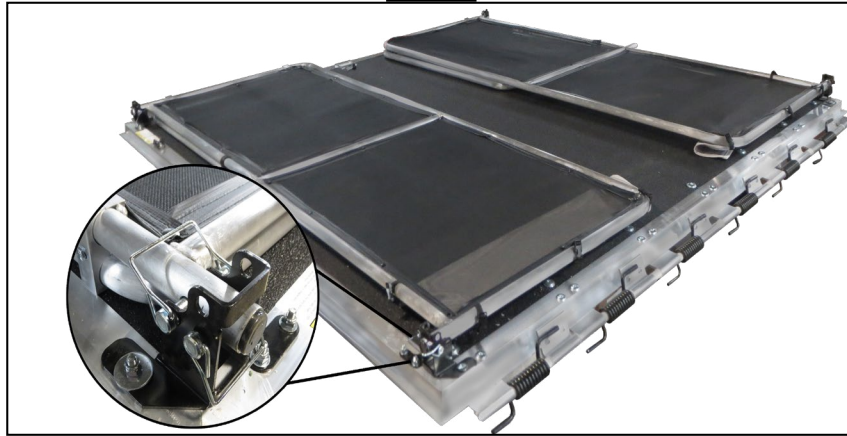
CAUTION

Moving parts can pinch, crush or cut. Keep clear and use caution.

Operation

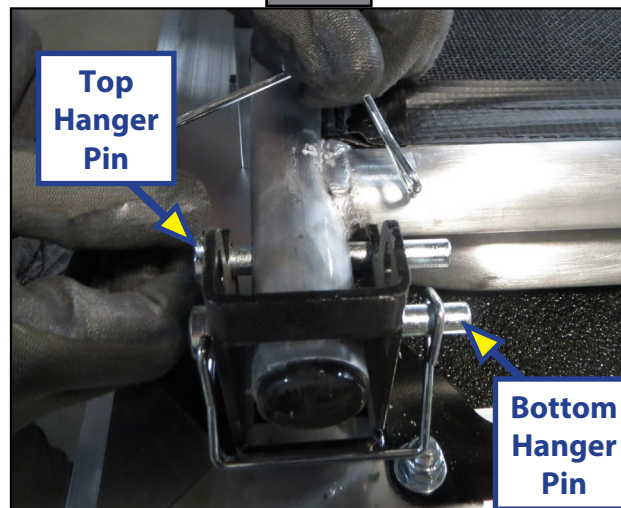
1. Lower Ramp Door to level position. Patio Kit should be folded in the storage position (Fig. 1).

Fig. 1



2. Starting with the hanger pin closest to the coach, unpin the top (4) hanger pins from foot brackets in corners (Fig. 2).

Fig. 2



3. Firmly grasp both the top and bottom of the patio frames (Fig. 3).

Fig. 3



4. The gate moves vertically. While SUPPORTING frame, pull towards yourself, lifting before it is rotated into either the setup or tear down position (Fig. 4).

NOTE: DO NOT scrape the boot and frame leg on the ramp door. Doing so may damage the coating on the floor and the frame.

Fig. 4



5. Replace top hanger pins (4) to secure the railing. Swing the patio kit doors away from the rest of the frame and link together in the middle (Fig. 5).

Fig. 5



6. Be sure to slide legs into guide plate (Fig. 6).
7. Apply thumb screws to secure the gate in a locked position (Fig. 7).

Fig. 6

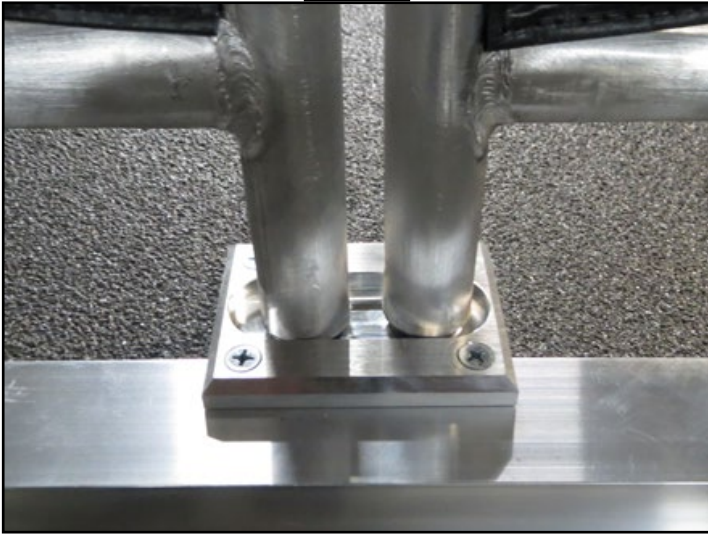


Fig. 7



Fig. 8

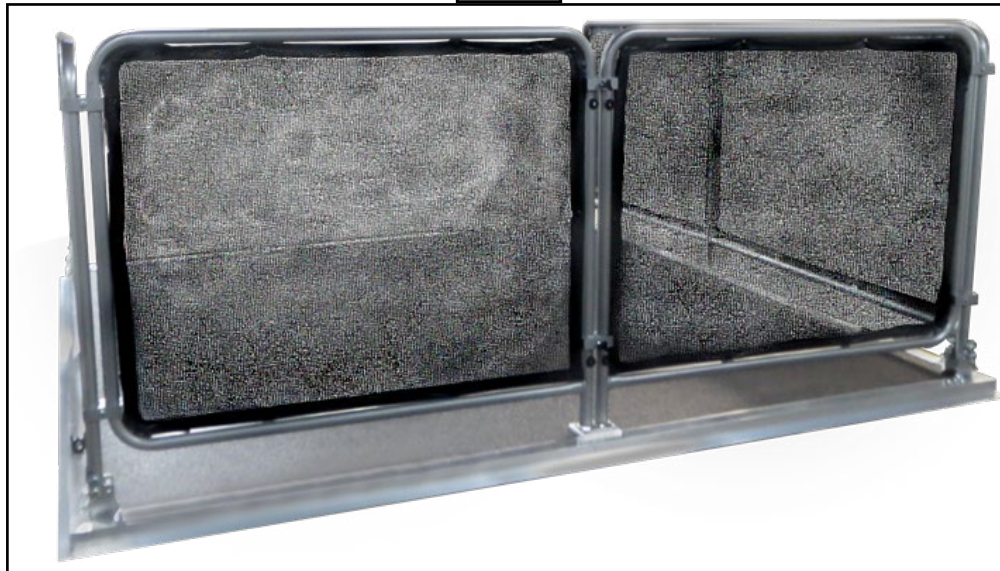


Fig. 9





L I P P E R T C O M P O N E N T S[®]

The contents of this manual are proprietary and copyright protected by Lippert Components, Inc. ("LCI"). LCI prohibits the copying or dissemination of portions of this manual unless prior written consent from an authorized LCI representative has been provided. Any unauthorized use shall void any applicable warranty. The information contained in this manual is subject to change without notice and at the sole discretion of LCI.

Revised editions are available for free download from lci1.com.

Please recycle all obsolete materials.

For all concerns or questions, please contact
Lippert Components, Inc.

Ph: (574) 537-8900 | Web: lci1.com | Email: customerservice@lci1.com